

February
2007

Of
Continuing
Interest...

**Frida Kahlo-
Her
Life's Work**

**500 Years
of Female
Portraits**

**Picasso's
Blue Period
1901-04**

Van Gogh

**Dali
Exhibition**

**Visit the
Louvre**

**Marc
Chagall
Paintings**

**Rob
Gonsalves:
Amazing
Illusions**

**Monet
Seascapes**

**Russian
Masterpieces**

**Paul
Cezanne
Paintings**

**Moscow's
Subway
Stations**

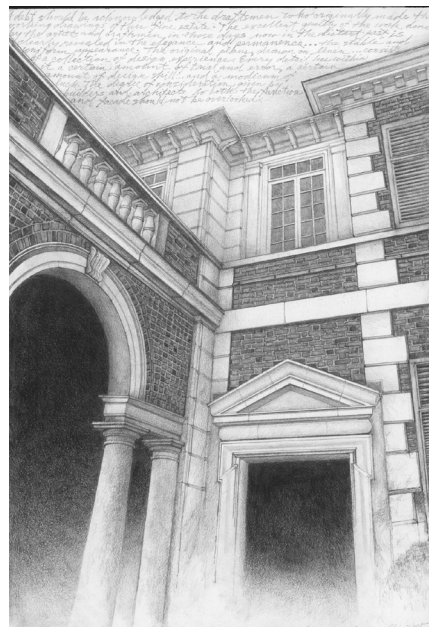
Art Knowledge News

Keeping you in touch with the 'World of Art'

Charles Brindley Named Artist-In-Residence at Evansville Museum



Charles Brindley - *Giant Beech Tree in Winter*,
2003 - oil on canvas - 58x48 inches
Collection of Cathy and Clay Jackson



Charles Brindley - *The Artist's Contract*,
2006 - graphite on paper - 16x10 inches
Collection of Linda and Michael Marziano

Evansville, Indiana - Charles Brindley has been selected as the Evansville Museum's **2007 Martha and Merritt deJong Memorial Artist-In-Residence**. In conjunction with his residency and weeklong classes, forty of Brindley's works will be featured until June 17 in a Main Gallery exhibition presented in partnership with the MARTHA AND MERRITT DEJONG FOUNDATION. Brindley's paintings and drawings depict a variety of symbol-laden subjects, including giant deciduous trees, panoramic landscapes, prehistoric ruins, rock formations, architecture and still lifes.

His images are highly representational but contain many abstract elements. Drawn from public and private collections, this 15-year retrospective exhibition will highlight each of the artist's subject themes and include a major new work entitled *Spirit of the Greenwood: Giant Beech Tree in Summer*.

Four touring exhibitions of Brindley's paintings and drawings have traveled to museums and art centers in the Southeast and Midwest. He has been represented by galleries in numerous cities, including Nashville, Memphis, Taos, Washington, DC and New York City; and his work appears in public, private and corporate collections throughout the United States. Most recently, the artist has been involved with the restoration and preservation of the Tennessee Residence (formerly known as the Governor's Mansion). Brindley was commissioned to create a series of images of the Residence and surrounding landscape which were exhibited in a statewide tour in 2005-06.

visit the Evansville Museum at www.emuseum.org

Related Recent News Articles

Egg Tempera Painter-Fred Wessel at the Evansville Museum
The Genius of da Vinci Exhibited at the Evansville Museum